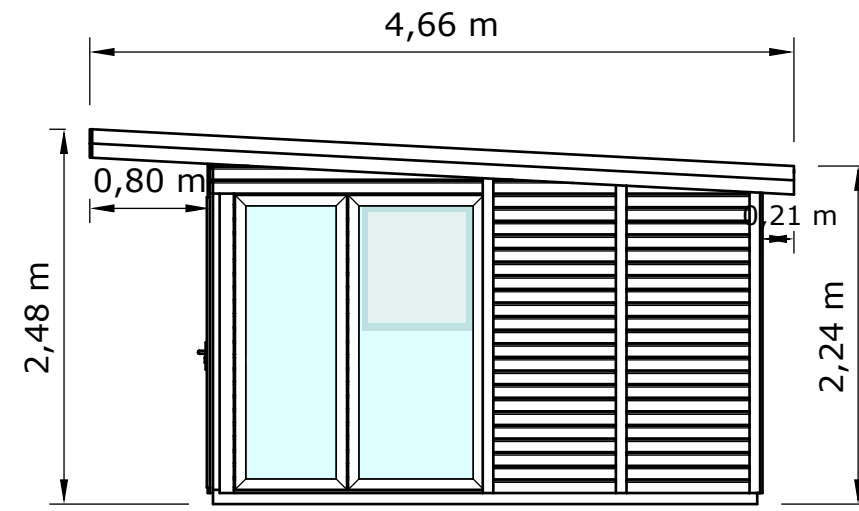


FRONT VIEW



SIDE VIEW



**Airi 22 Plastic, insulated:**

**Roof:**

- \* roof boards 19 mm.
- \* rafters 44x120 mm., step 556 mm.
- \* EPS insulation 65 mm.
- \* interior paneling 12 mm.

**Walls:**

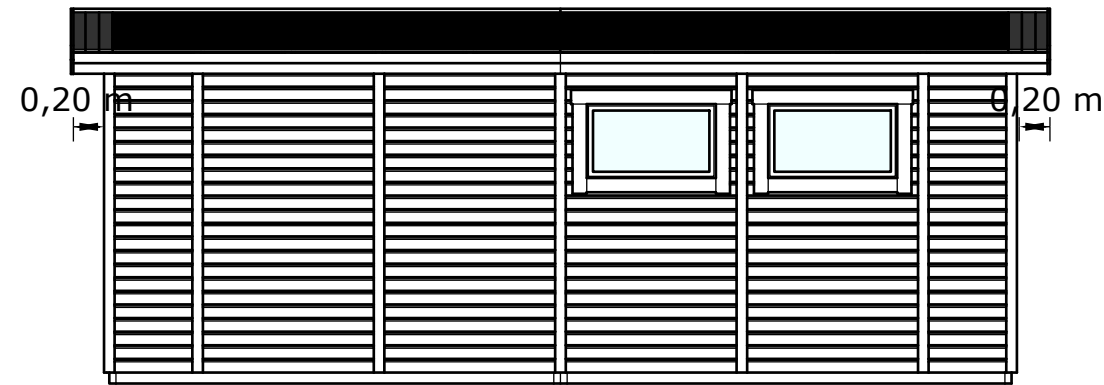
- \* outside paneling 19 mm.
- \* frame wood 44x44 mm. x2
- \* EPS insulation 35 mm.
- \* interior paneling 12 mm.

**Floor:**

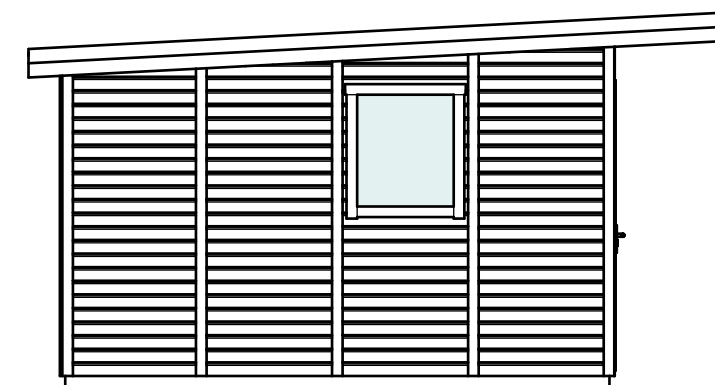
- \* floor joists 44x94 mm.
- \* EPS insulation 65 mm.
- \* floor boards 19 mm.

**Door and windows:**

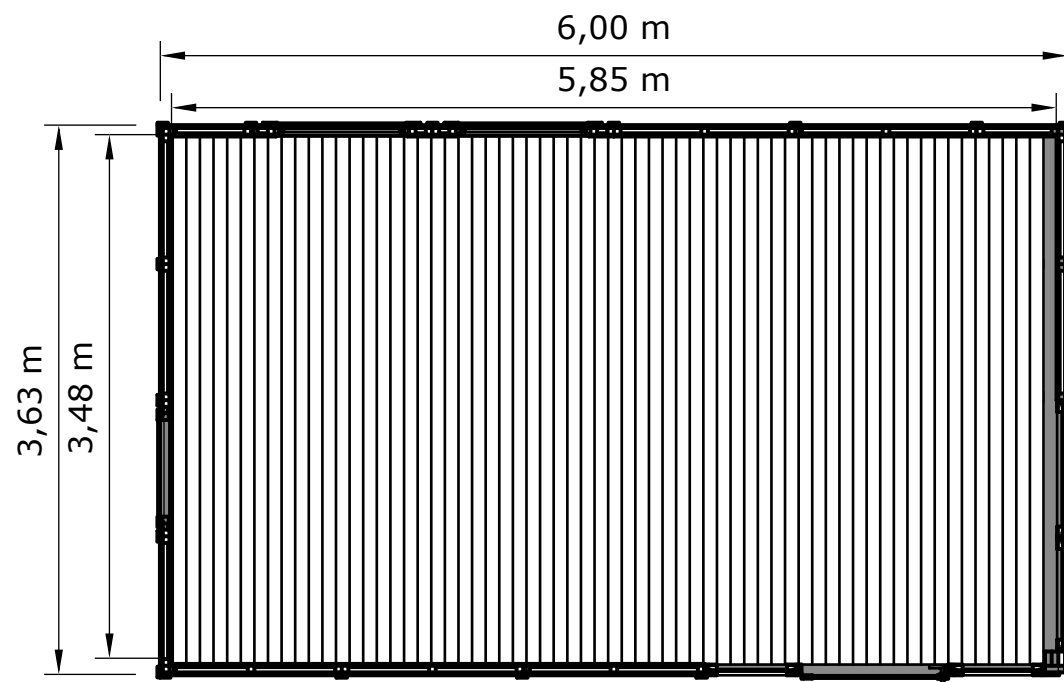
- \* windows back and side walls opening, ISO 14 mm.
- \* door 100x195 cm., ISO 14 mm.
- \* building closures have plastic frames, ISO 14 mm.



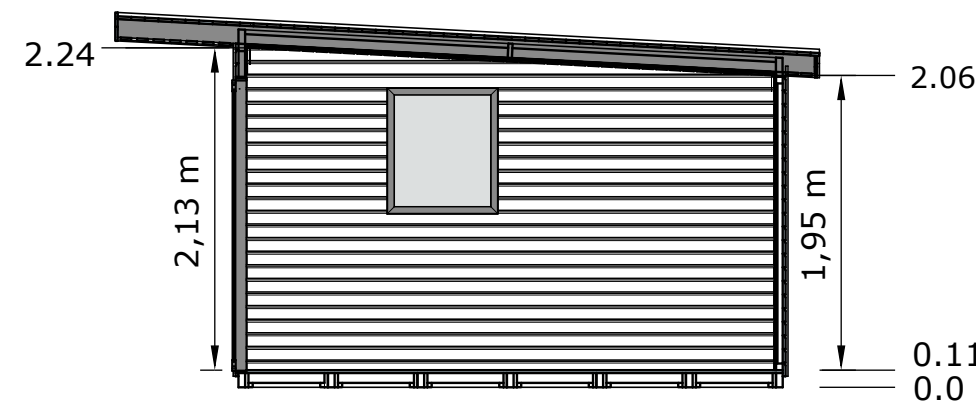
BACK VIEW



SIDE VIEW



FLOOR PLAN



SECTION A-A

**AIRI 22 PLASTIC  
INSULATED  
M1:50**