

# Polar Tub Royal



**Assembly of the Polar hot tub**  
With pump and filter system



# Contents

Before you begin	3
Tips on placing the foundations	4
Specifications	5
Process	6
Connecting the hoses	7
Placement and assembly	8
The accompanying set of steps	10
Accessories	11
Installing the Pump and filter system	12
Frost Guard	13
Heating	14
Electrical installation	14
Maintenance advice	15
Firing tips	16

## Before you begin

Before you begin to assemble the hot tub, it's important to ensure that the site you have chosen is level and stable. The polar hot tub must rest on firm ground and be level with no risk of settling or shifting when the tub is fully filled. The hot tub weighs approximately 270 kg when empty and when filled with 1 150 litres of water can weigh up to 1420 kg. With 4 people using the tub, this can easily add another 250-300 kg.

Place the hot tub on a level surface and preferably on concrete slabs that are placed on the outer edge of the hot tub under each support. If the hot tub is on a lawn, we recommend you dig out the grass and lay out a gravel bed of approx. 100 mm as a secure foundation for the tub.

**PLEASE REMEMBER** that air must be able to flow under the hot tub for ventilation and to aid drying.

## Tips on placing the foundations

1. Dig down and remove the top layer of the lawn or ground.
2. Add a supporting layer of macadam or gravel before placing the concrete blocks. Diameter approx. 1950 mm.
3. Make sure the foundations are stable and level.
4. Position the concrete blocks to match the understand supports of the tub.



# Specifications

## Hot tub

Pre-assembled with stove and heat-treated pine panel

## Chimney

2 pipes of 1 m (dia 125 mm) + angle pipes,  
flue pipe protection and rain cap

## Stairs

Rounded with two steps made of heat-treated pine  
D 450 x W 835 x H 610 mm

## Other

Fireplace grill, fireplace door and drain tap included,  
fitted during installation

### **Stainless steel**

The metal parts in the Polar tub are made from stainless steel according to the following quality scale:

Chimney and front plate: **Stainless steel 430**

Oven and 90 degree chimney bend: **Stainless steel 304**



# Process

1. Unscrew the support boards from the package.
2. Carefully cut away the plastic on the underside with a knife and remove all loose parts from the hot tub.
3. The hot tub contains all the parts for the chimney as well as a spigot and details for the fireplace. You will also find instructions on assembling the chimney.
4. Position the tub carefully in the location you have chosen.  
Do not do this step yourself - remember that the hot tub weighs approx. 270 kg!

**NEVER** roll the hot tub on its edge at any time. This can destroy the edge boards and firing chamber!



## Connecting the hoses

Polar hot tubs with prepared couplings have 4 holes that you can see from the inside of the Polar hot tub.

- 2 of the holes are for the water flow produced when you light a fire in the Polar hot tub's fire chamber. Water from the bottom of the tub is directed into the lower hole and circulates around the stove's hearth in the double-encased cavity, and the piping hot water flows from the upper hole. When you have lit the fire, you will feel a warm water start to flow.
- The other 2 holes are for connecting the pump and filter system hoses. These connections are sealed and you don't need to do anything if you are not installing these systems.

### **PLEASE NOTE!**

Mount the hoses when the Polar Tub is resting on its side. As once in place, it is almost impossible to reach the hose connectors.

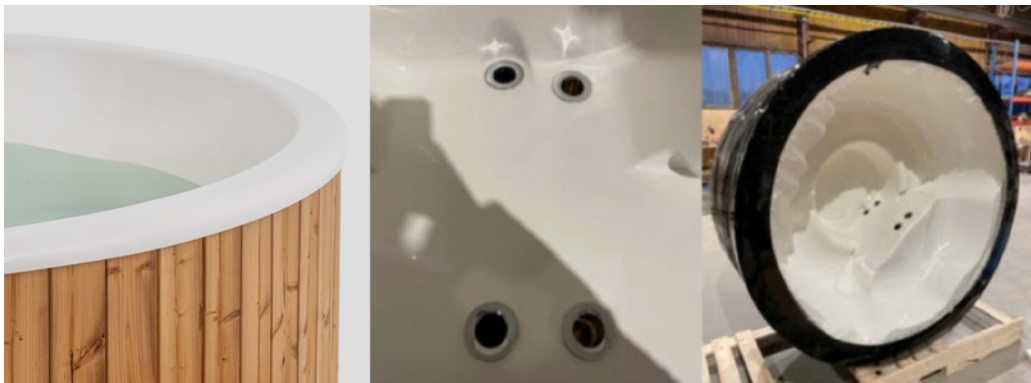




Fig. 1



Fig. 2

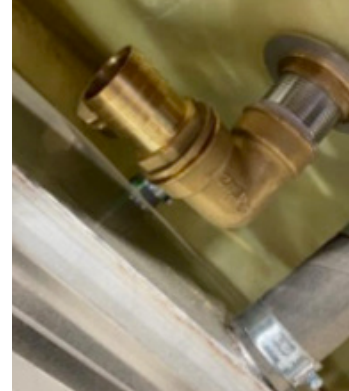


Fig. 3

In the space between the fiberglass and the fire chamber, there are 2 pre-assembled connectors (see fig. 1). Unscrew the protective cover (see fig. 2) and fasten the supplied connectors for attaching the hose (fig. 3).

Fit the inflow to the pool in the lower hole and the outflow in the upper hole. Use thread tape to ensure that the connection is properly sealed. You can wrap the connection 15-20 times before fastening. Thread tape is included in the pump and filter system's packaging.



## Placement and assembly

Carefully place the Polar hot tub on the concrete blocks, using a layer of water resistant ground sheet between the blocks and the tub's wooden supports to prevent moisture migrating into the tub from the ground.



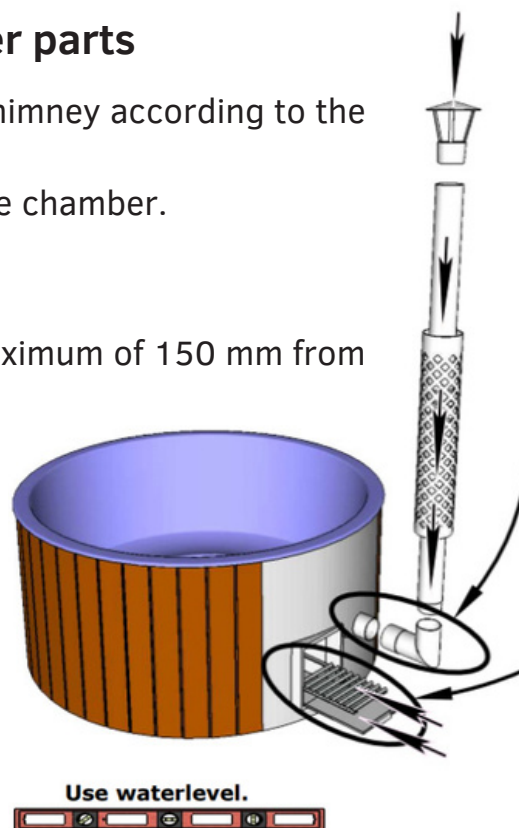
Dimension of the emptying tap 25 mm.

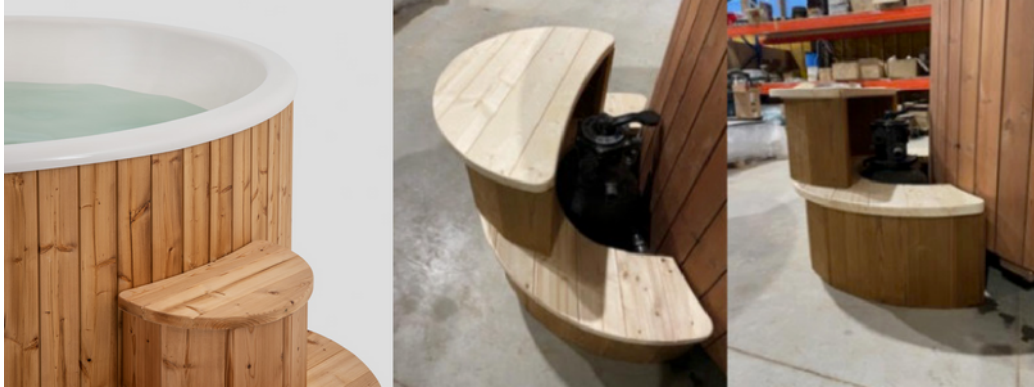
## Process for assembly of other parts

1. After positioning, assemble the chimney according to the model's instructions.
2. Place the fireplace grate in the fire chamber.
3. Install the fireplace door.
4. Install the emptying tap.
5. Fill the hot tub with water to a maximum of 150 mm from the edge before you start heating.

### PLEASE NOTE!

The chimney protection is an optional extra





## The accompanying set of steps

The stairs will enable both the pump and filter system to fit inside it. • When you attach the hose to the pump and filter system, measure

so that the hose reaches to where you intend to place the pump/ filter unit. Likewise, you must attach the hose before positioning the Polar hot tub. The connections can be hard to access after positioning the tub!

- Use the clamp rings supplied with the pump and filter System for this attachment.
- Water from the tub used by the pump and filter system must flow from the lower hole and clean water must flow from the pump and filter system to the Polar hot tub and to the upper hole.



## **Accessories**

### **Insulating lids**

Insulating lids are available as an optional extra for the Polar hot tubs Royal and Royal Grande and can be easily secured in place by following the instructions. There are no optional extra covers for the Polar hot tub Original.

### **Pump and filter system**

If you have chosen to upgrade your Polar hot tub with a pump/filter system and our Frost Guard, read on to find out how to connect your Polar hot tub correctly.



### **Installing the Pump and filter system**

Clear installation instructions for the pump and filter system can be found in the manuals available on the Polhus website.

- **Pump and Filter System Manual**
- **Assembly film for the Pump and Filter System**

You can use the pump and filter system whilst the fire chamber is lit. However, when using the pool, you should turn off the pump as the pump noise can be annoying and the water flow in the Polar tub can feel too strong when bathing.

### **The pump and filter system also includes:**

- A Fibalon Pool Filter that is used in the filter system and replaces the sand that was previously used for pool cleaning. The fibalon can be removed and cleaned in a washing machine. This is an environmentally friendly solution and is easier to maintain than sand.  
You should not backwash the system when using fibalon - more information is available in the manual.
- Test strips - test strips are used to check the water's pH value and chlorine content.
- CombiTabs are chlorine-free cleaning tablets. These are placed in the supplied floating container and placed on the drain surface. The agent slowly dissolves in the water and adds cleaning agents to the water.
- Ph minus agent that you can add directly to the water if you measure a high Ph value on your test strip.



Pump and filter system



Frost guard

### **Frostguard - electric heater 3 kW**

The frost guard must be mounted on the hose that leads the water from the pump and filter system to the connection in the Polar hot tub.

It is important that you hire a qualified electrician to undertake this work.

The frost guard has an output of 3 kW, which means that you need to ensure that sufficient output can be maintained.

### **Frost guard Manual**



## Heating

Dry hardwood offers the best results with combustion. Royal is highly efficient and the water reaches 37 degrees within about 2 hours. This will vary depending on the temperature of the water and surrounding air. Use the insulated lid (optional extra) when heating to improve efficiency.

## Electrical installation

The polar hot tub does not need electricity to function. If you have ordered an electric heater, water pump or water treatment system, connect this equipment according to the enclosed instructions for your model. Ordered lighting is mounted in the tub, and for other parts, please follow the relevant installation instructions.

**PLEASE NOTE!** Remember that any electrical work must be carried out by a qualified electrician!





## Maintenance advice

Treat the exterior wood of the hot tub regularly (1-2 times/year) with wood oil. The design uses Thermowood combining an excellent finish with superb durability.

Bathing in the same water too many times can be both unhealthy and unpleasant. We recommend cleaning the hot tub after each dip. A cover or tarpaulin over the hot tub not only protects against dirt, but also reduces the heating time.

If you choose to chlorinate the water, please follow the instructions provided by the supplier. It is important to use the correct amount, and there is no need to over-chlorinate. Never chlorinate when the water is hot as this will prevent the chlorine from working. Polhus will not compensate for damage caused by over-use of chlorine.

**Please note**, you can also buy chlorine-free cleaning products with the same cleaning effect as chlorinated ones.

## Use of saltwater

**NOTE!** When using saltwater, the chromed and stainless parts will corrode. For an additional cost, you can purchase a high-quality wood stove capable of handling saltwater. However, other sheet metal parts, such as the front plate and chimney plates, will still corrode as they are manufactured according to the classes specified on page 5.

After using saltwater, it is essential to rinse the tub with fresh water. Even a tub placed near the sea will be exposed to significant salt exposure, potentially causing corrosion on the stainless parts.

## Firing tips

**NOTE!** Never start firing before the barrel is filled with water up to 150 mm from the rim.

- Make a fire of dry, finely cut wood in the oven.
  - Spray the wood with methylated spirits or use a lighter block. Do not use paper for ignition, it tends to generate flakes and soot to a greater extent.
- You can add more wood gradually as combustion takes place.
  - If you have a lid for your Polartunna, we recommend that you have them on when heating, it will reduce the heating time considerably

at cold air temperatures.

**NOTE!** Be careful when opening the lid or stove lid. Do not put your face over the stove opening, flammable gas may flare up.

- **NEVER** use explosive liquids or petrol.
- Be aware that fire and sparks can fly out of the chimney, so do not place the barrel near houses or combustible materials.
- Use dry hardwood for firewood. Spruce wood, for example, is spark-forming and sparks can ignite nearby flammable materials. Always position the barrel so that it does not present a risk of burning.