

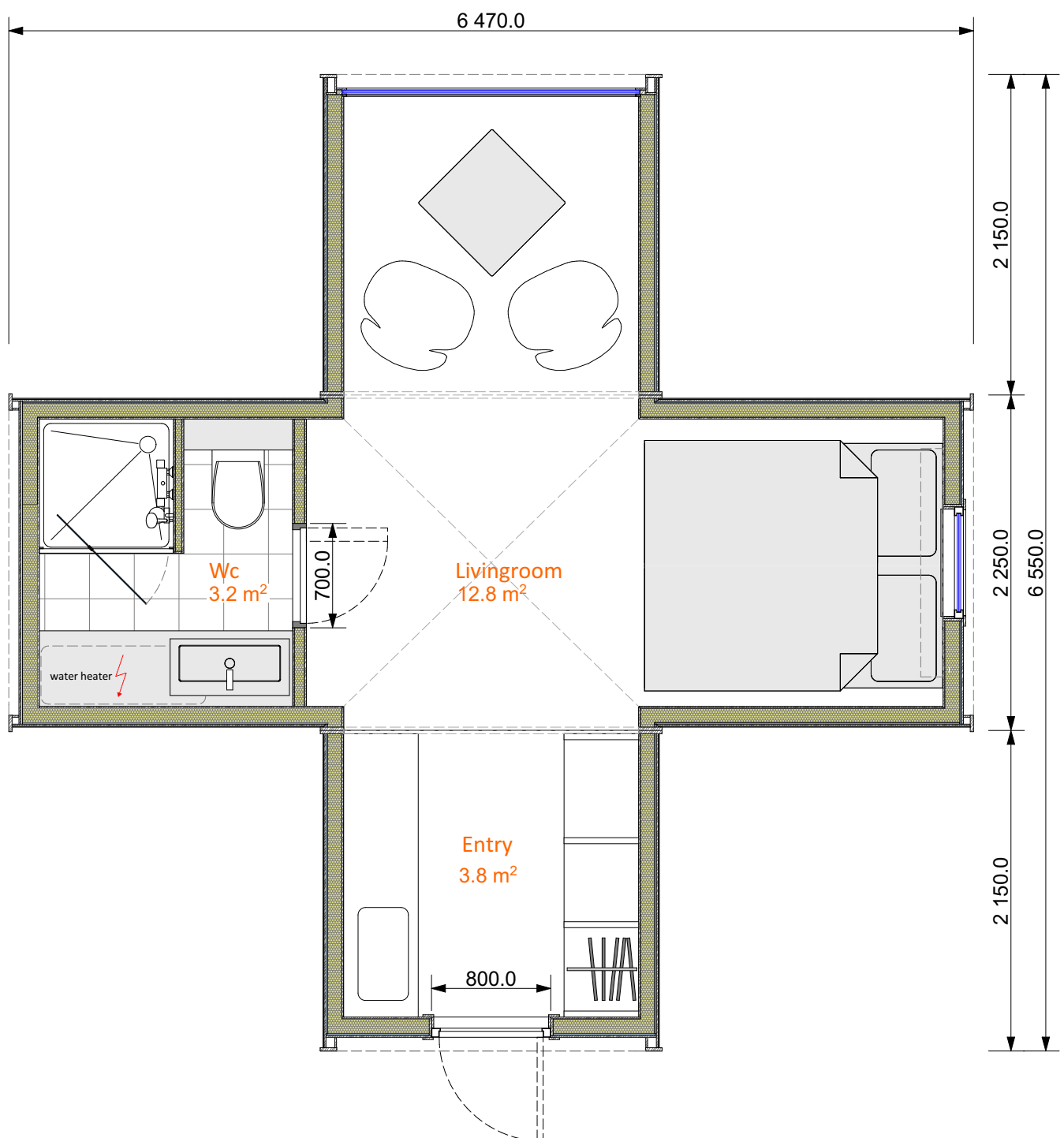
# Camping POD - L

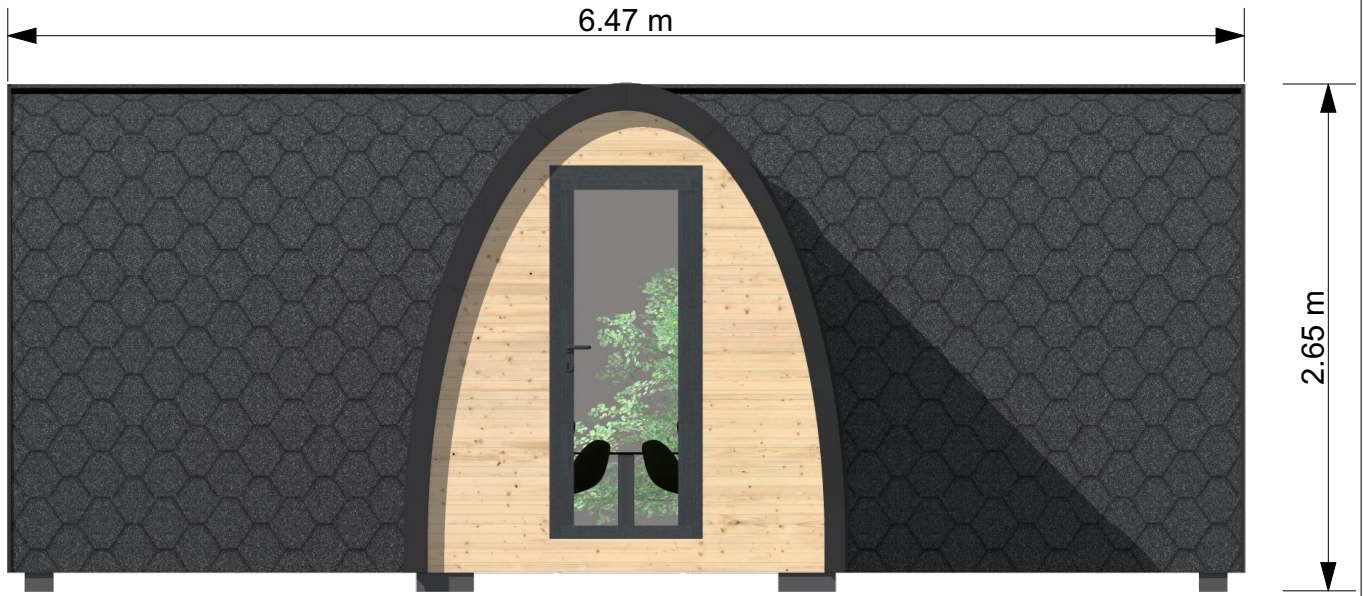
# Room Plan

Camping POD- L is a new design camping / garden house for year-round use. The Entrance is designed in a way, that you can use the most out of your space. The building does not require concrete base and is very easily mountable.

## Camping POD- S Specifications

- Length 6,7 m
- Width 6,55 m
- Height 2,65 m
- Floor area 19,8 m<sup>2</sup> (livingroom 12,8 m<sup>2</sup> + bathroom 3,2 m<sup>2</sup> + entry 3,8 m<sup>2</sup>)
- Electric floor heating
- Water heater 80 l (under the basin worktop)
- Wc and shower
- Glass wall, double glazing
- 1 openable window ( ISO), PVC frame
- Lockable door with glass ( ISO) PVC frame
- LED strip lighting, switches and sockets





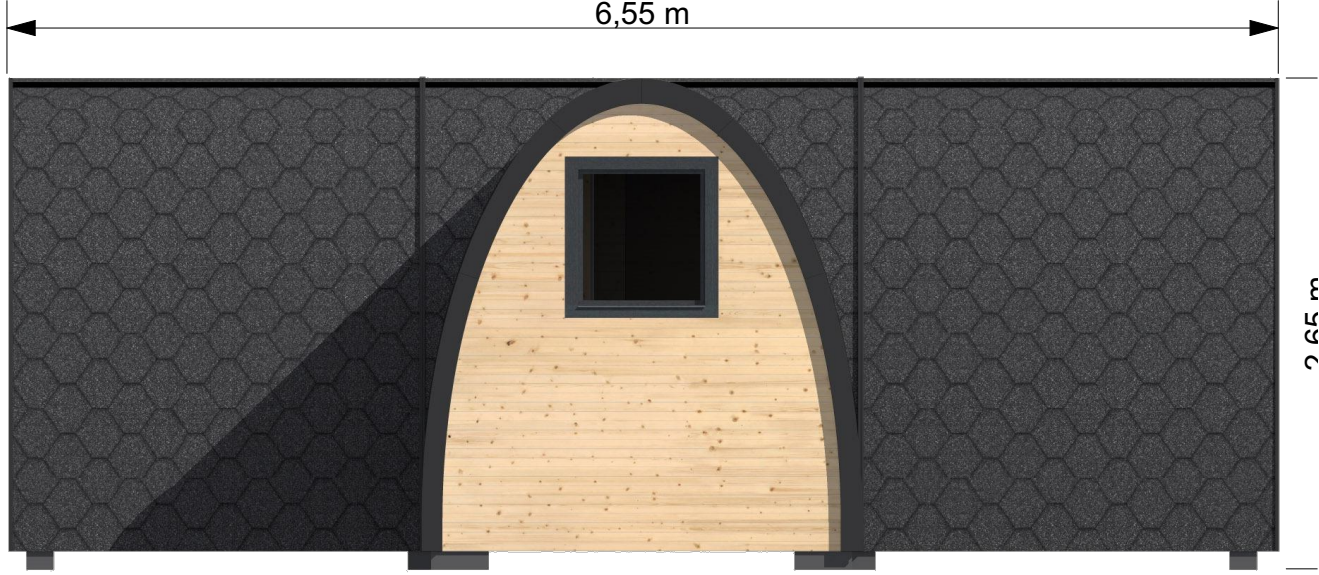
Front view



Right view



Rear view



Left view



