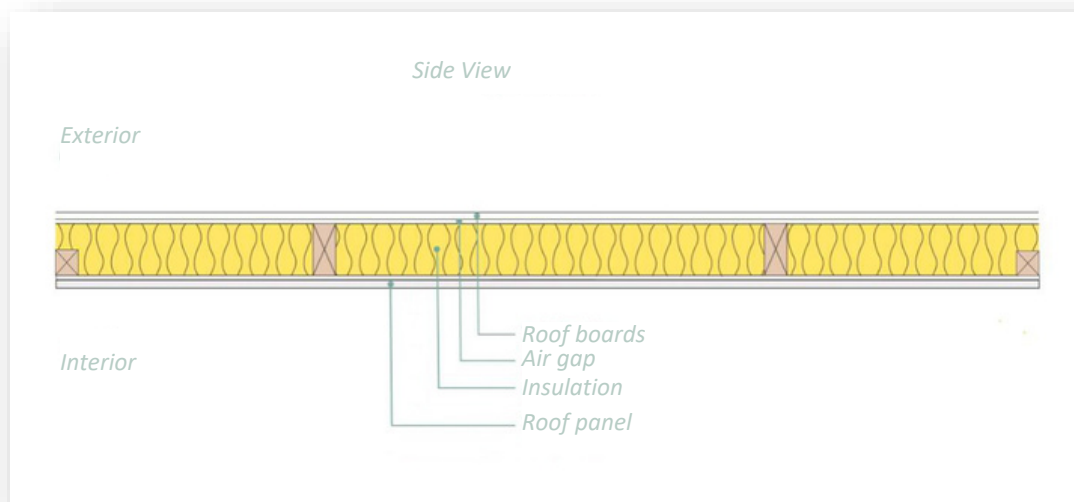




DESCRIPTION: ASSEMBLY OF PANEL AND INSULATION IN THE SAUNA CEILING



Materials in the house package:

The house package includes roof boards with a thickness ranging between 18-22 mm, depending on the specific sauna model. The package also always includes roof beams that support the roof boards. These beams are typically 120-145 mm high.

Materials in the optional package "Roof Insulation and Panel Package for 7,5m2 Sauna"

Included in package
- Insulation: 100 mm (3.74 inches)
- 5 packs spruce panels: 12 x 70 x 2400 mm (0.47 x 2.75 x 94.48 inches), may require length adjustment and cutting
- Included: Fastening clips

NOTE! In our 4m2 sauna rooms, there are always 2 roof beams that can be used for attaching the roof panel boards. However, there are no attachment possibilities on the walls. The battens marked in the above image are two 45x45 mm studs that can be fastened to the timber logs with screws or nails.

These studs are **not included** in our optional package. It's also possible to use other materials; there may be some leftover boards from the house package or other suitable materials.

The boards are necessary to attach the panel boards with 4 attachment points.

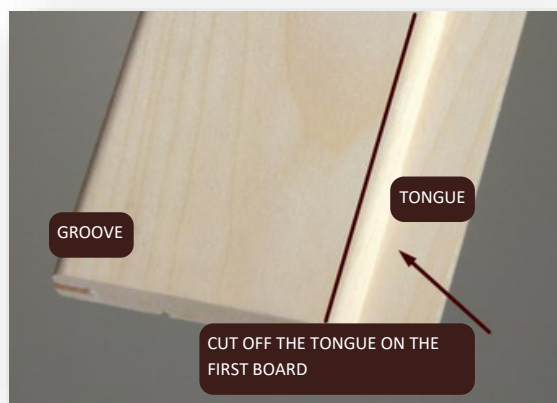
MONTERING

1. Measure a line from the two roof beams towards each side.
2. Attach the studs/battens to the walls by screwing or nailing them into the walls' timber logs.
3. Cut the insulation to the correct width and place it between the roof beams. It is important to leave a gap between the top of the insulation and the bottom of the roof board of approximately 25 mm.



4. Sauna Panel Installation:

- a. Adjust the length of the boards to create a 5 mm gap between the roof board and the timber log by sawing with a fine-toothed saw.
- b. The roof will be better if, on the first starter board, you cut off the tongue so that the board has a complete and even edge against the wall.



- c. Nail the board with a brad nailer upwards into the 4 studs/roof beams.
- d. Then, use the included panel clips to attach each board to all 4 studs/roof beams. Place the clips in the groove and screw through the hole in the clip up into the studs/roof beams.



- e. When the last 4 boards are to be installed, check that the distance to the wall is the same along the entire length of the board. If adjustments are needed, you can leave a larger gap between the boards on one side.
- f. The last board should be cut to fit; it should be nailed with brad nails to ensure that the nail heads are not visible. Also, remember to leave a 5 mm gap between the board and the wall in the same way as with the starter board. (Brad nails are not included in the optional package; you will need 8-10 of them.)

