



INSTRUCTION MANUAL
FLOOR BEAMS

BASED ON GROUNDSCREW FOUNDATIONS



TOOLS AND MATERIALS YOU NEED



NOT INCLUDED

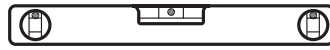
SPACERS



ELECTRIC DRILL + BITS



SPIRIT LEVEL

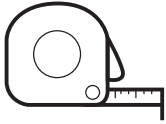


WOOD SCREWS WIDE HEAD

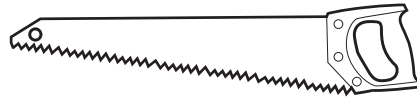


40 mm long, 11 mm wide head

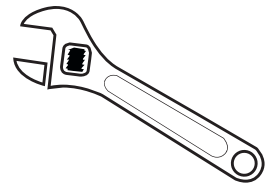
TAPE MEASURE



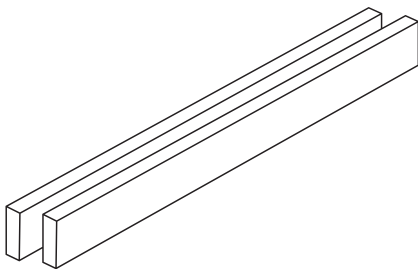
SAW



ADJUSTABLE WRENCH

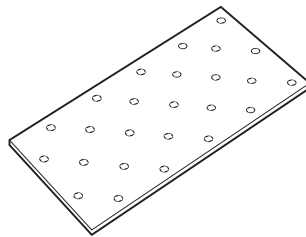


WOOD BEAMS, PRESSURE TREATED



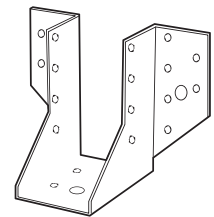
Min 45 x 145
length depending on house model

NAIL PLATES



Min 200 x 100 mm
depending on house model

BEAM HANGERS



BEFORE YOU START

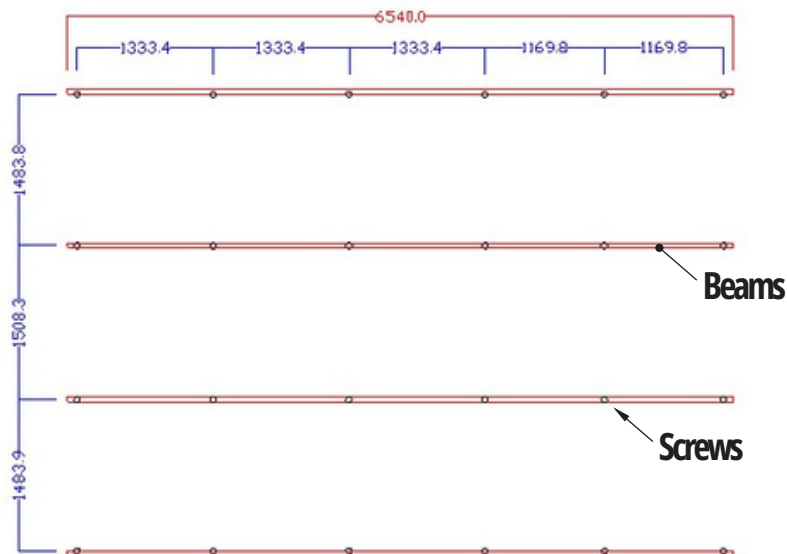
Read through manual and see drawing for screws/beams.

1. LOOK AT DRAWING SCREWS/BEAMS

To find out how to proceed with the work you must look at the project specific ground screw layout. Layouts below are two examples of how it can look (don't look at dimensions and number of screws), compare these with your particular drawing and **then proceed to the page for your ground.**

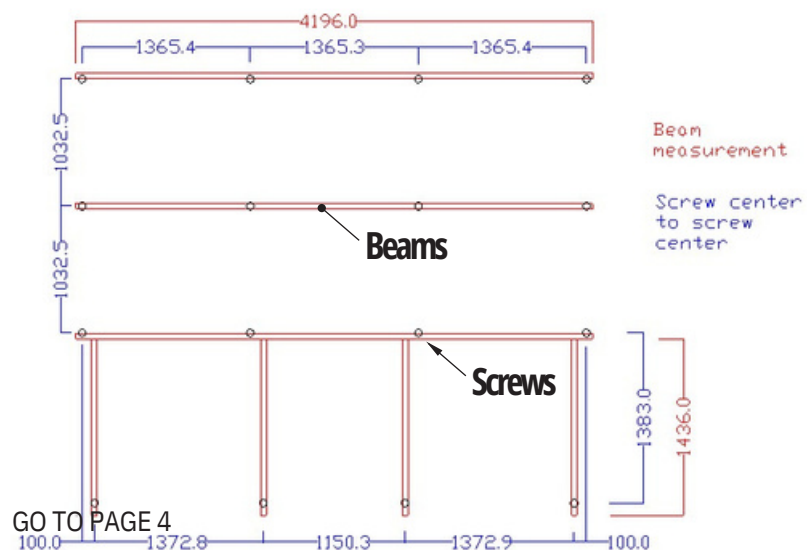
IF IT LOOKS LIKE THIS - GO TO PAGE 4

All the beams are in the same direction



IF IT LOOKS LIKE THIS - GO TO PAGE 9

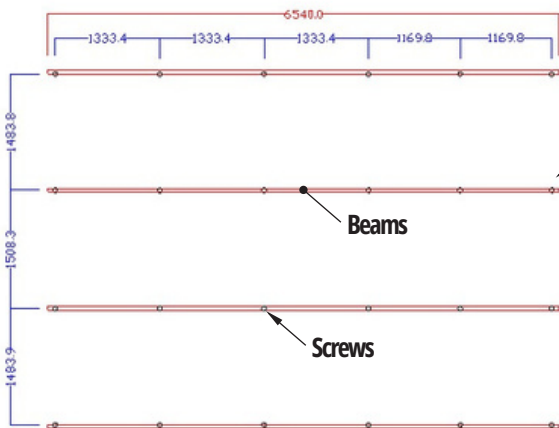
The beams are in different directions.



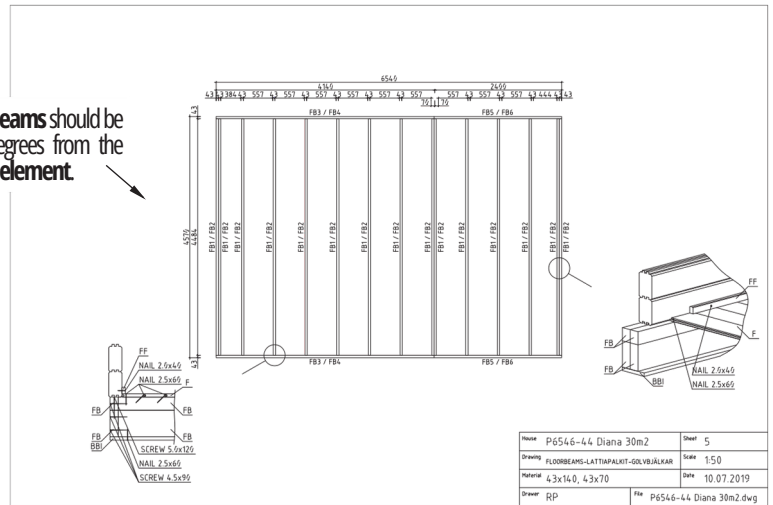
GO TO PAGE 4

2. FIND DIRECTION FOR THE BEAMS

For this step you need information from the manual of your house. Below is an example of drawings for tiny house.



The beams should be 90 degrees from the floor element.



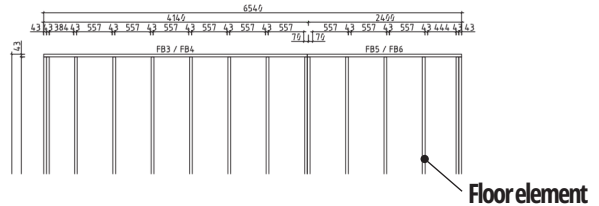
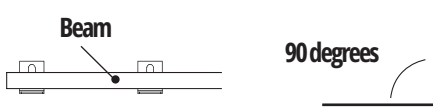
LAYOUT FOR SCREWS/BEAMS

Drawing comes with the installations of screws.

EXAMPLE OF DRAWING FROM HOUSE MANUFACTURER

Look in the manual for drawing of floorbeams. Manual comes with the house delivery, or can usually be downloaded.

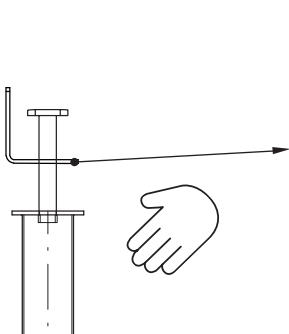
The beams should be 90 degrees from the floor element.



3. INSTALL APPLICATION ON SCREWS

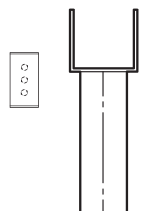
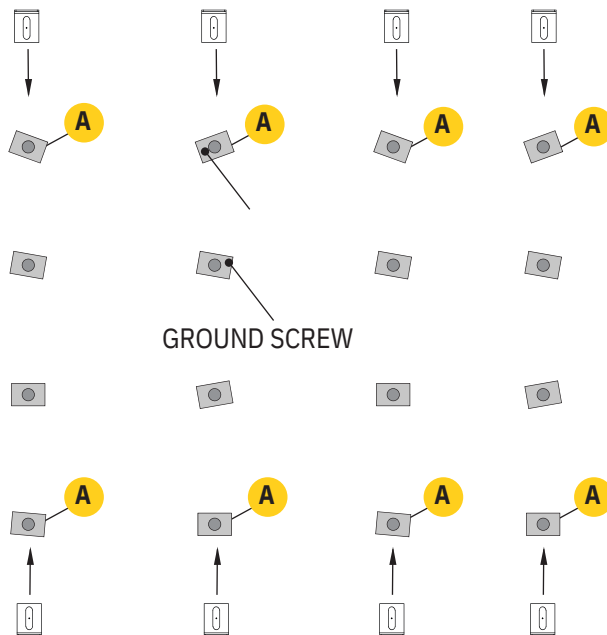
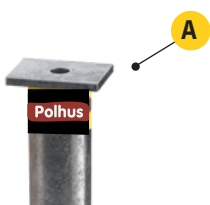
Screw down application with bolt by hand on outer screws marked **A** in drawing below.

Example with 16 screws from StopDigging.



SGP screws

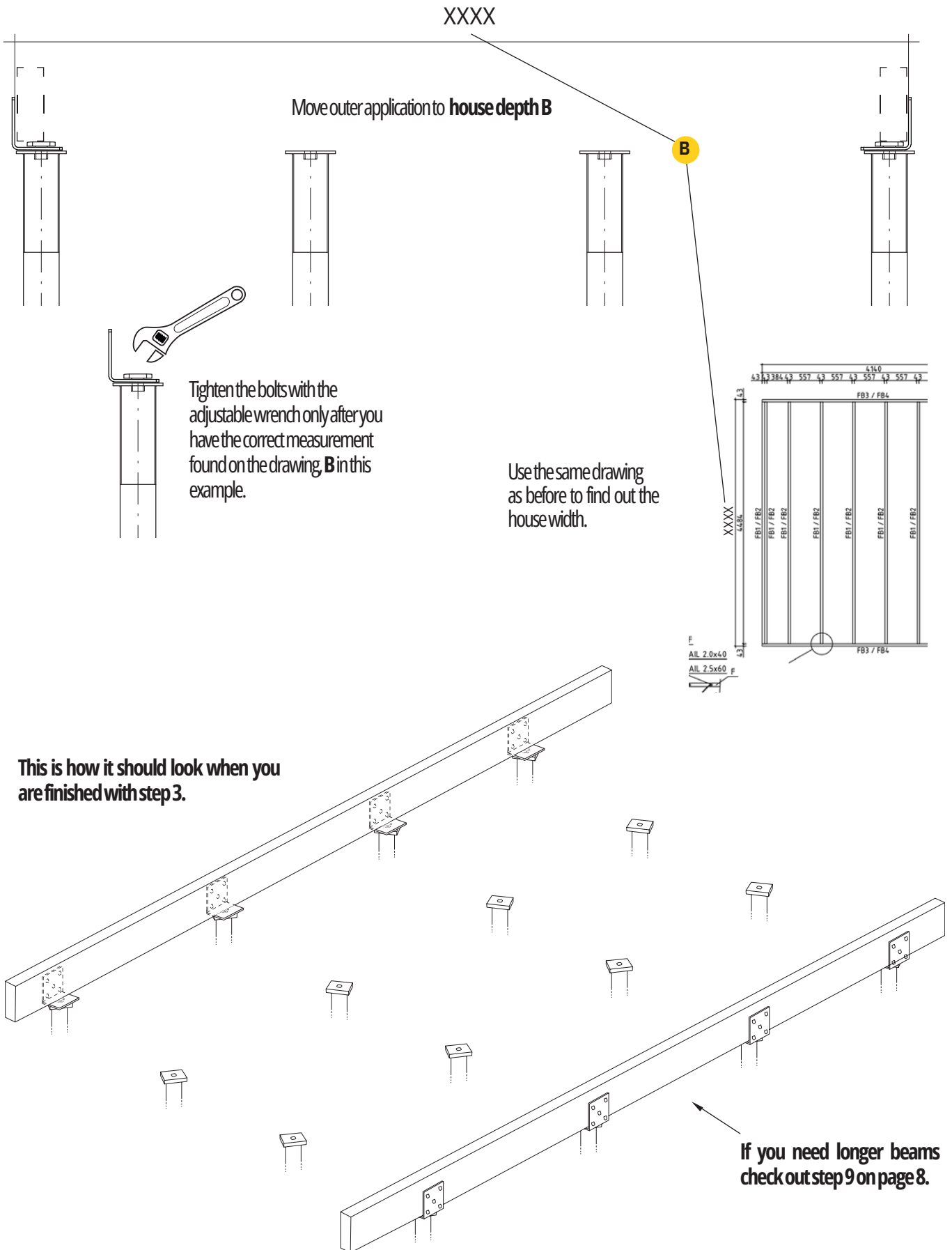
(Screw down bolt for application by hand)



In some cases we use SGU screws (no need for screwing down bolt by hand)

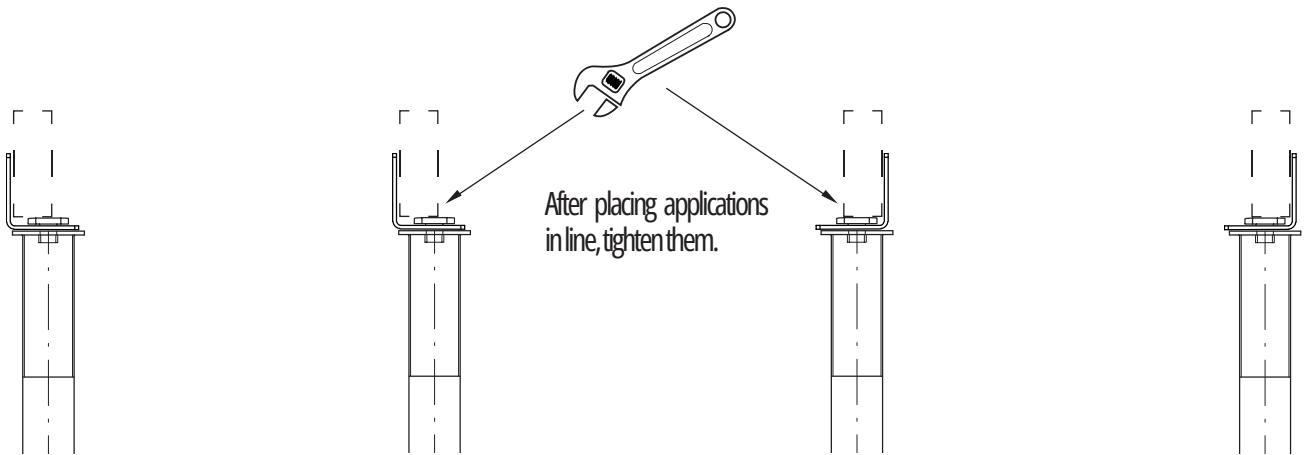
4. PLACE THE BEAMS ON OUTER SCREWS

Now it is time to measure the placement of outer applications to house depth. In the example below the inner measurement between applications should be XXXX mm.



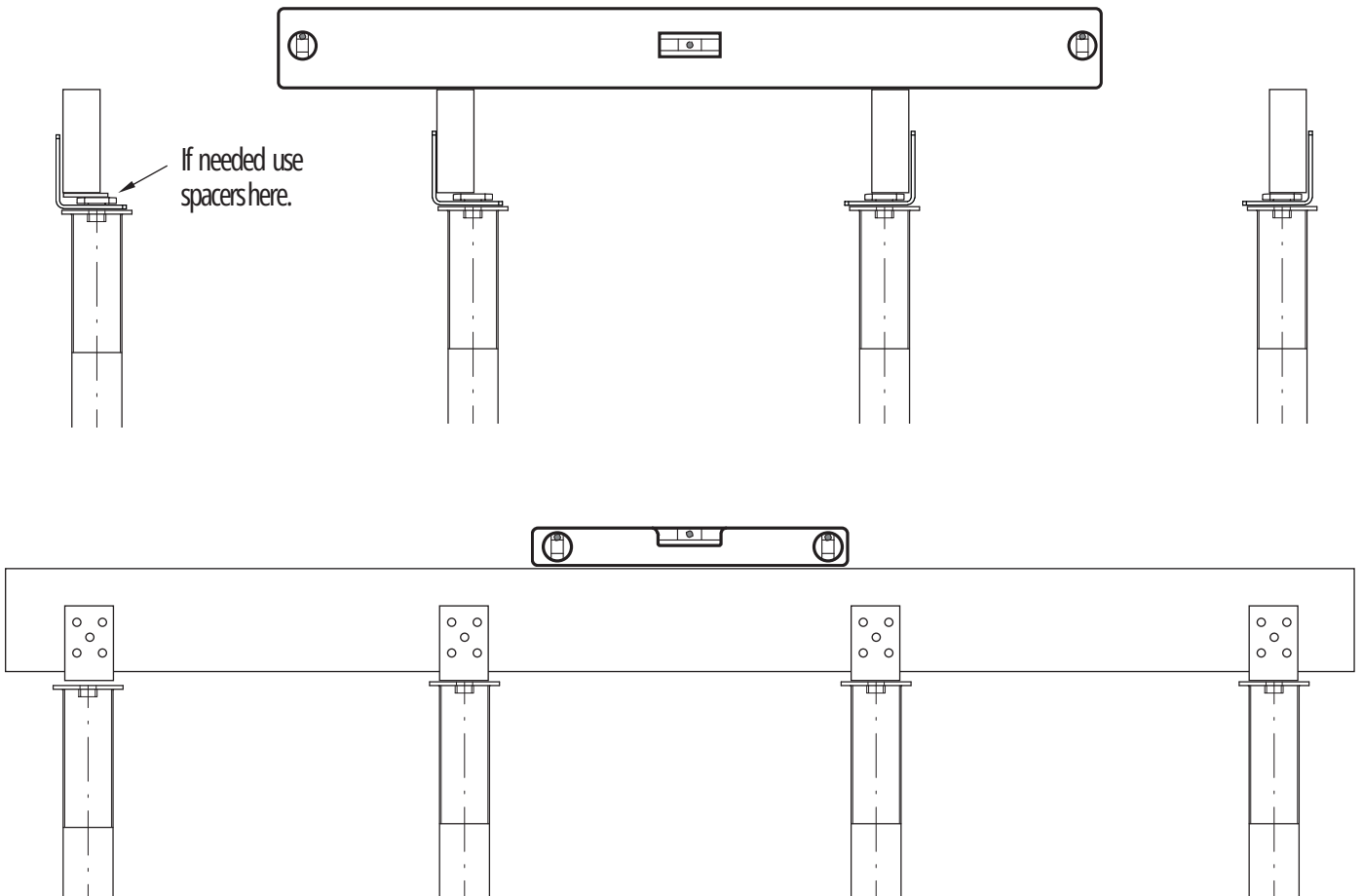
5. INSTALL MIDDLE APPLICATIONS

It is important to install the application in a line. Use a beam as a guide and then tighten the bolts with the adjustable wrench.



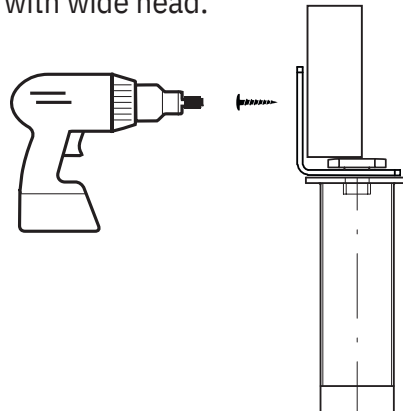
6. MAKE SURE BEAMS ARE ALL LEVEL

Place the beams on all screws, outer as well as inner. Here you can use the spacers to level out all the beams.



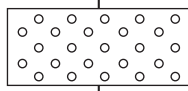
7. FASTEN ALL BEAMS TO APPLICATIONS

Fasten beams using outdoor wood screws with wide head.

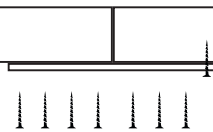
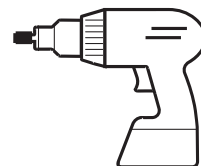


8. JOINING BEAMS IF NEEDED LONGER

If you don't have long enough beams you have to take two beams and join them together with nail plate.



MINIMUM 14 SCREWS
7 ON EACH SIDE



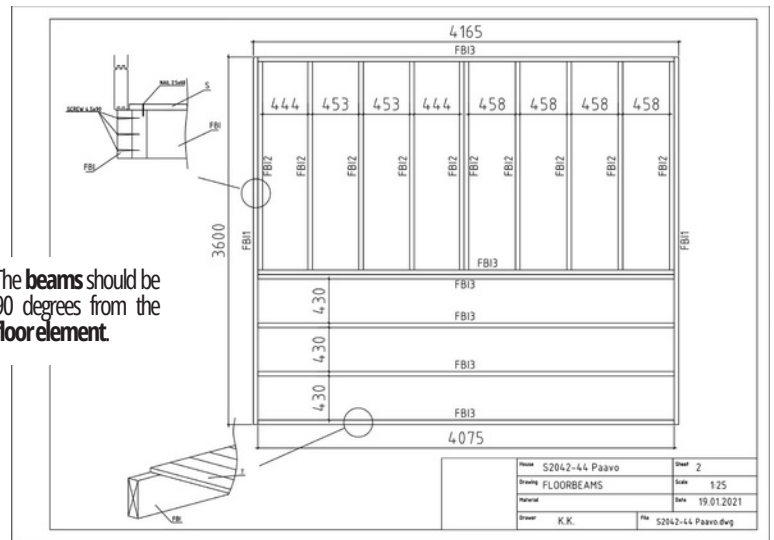
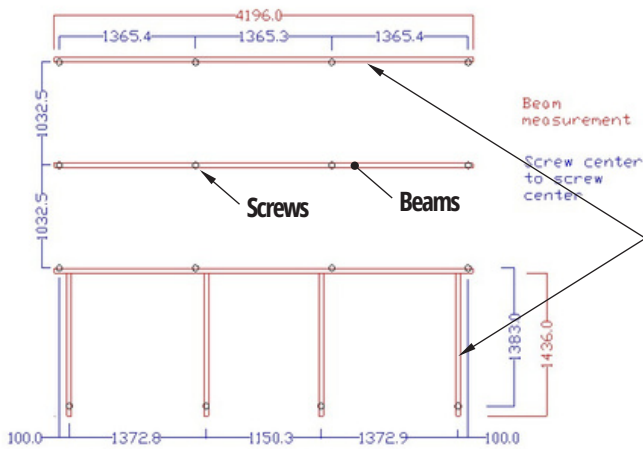
MINIMUM 14 SCREWS
7 ON EACH SIDE

9. MOUNT FLOOR JOISTS ON TOP OF BEAMS

When the floor joists are placed correctly on top of the floor beams, you can attach them. This step is so you in the next step easily can cut the floor beams to correct length.

2. FIND DIRECTION FOR THE BEAMS

For this step you need information from the manual of your house. Below you see example of drawings for a tiny house.



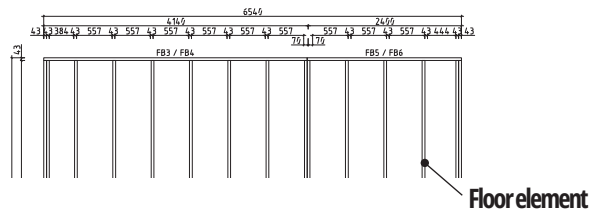
LAYOUT FOR SCREWS/BEAMS

Drawing comes with the installations of screws.

EXAMPLE OF DRAWING FROM HOUSE MANUFACTURER

Look in the manual for drawing of floorbeams. Manual comes with the house delivery, or can usually be downloaded.

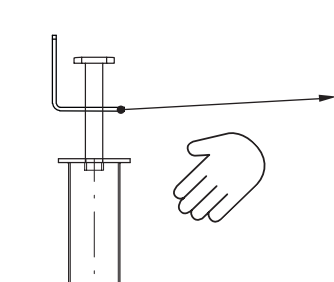
The beams should be 90 degrees from the floorelement.



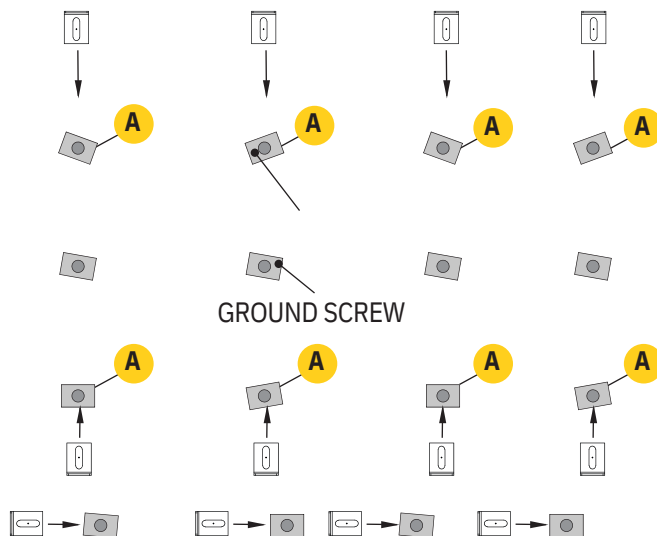
3. INSTALL APPLICATION ON SCREWS

Screw down application with bolt by hand on outer screws marked **A** in drawing below.

Example with 16 screws from StopDigging.



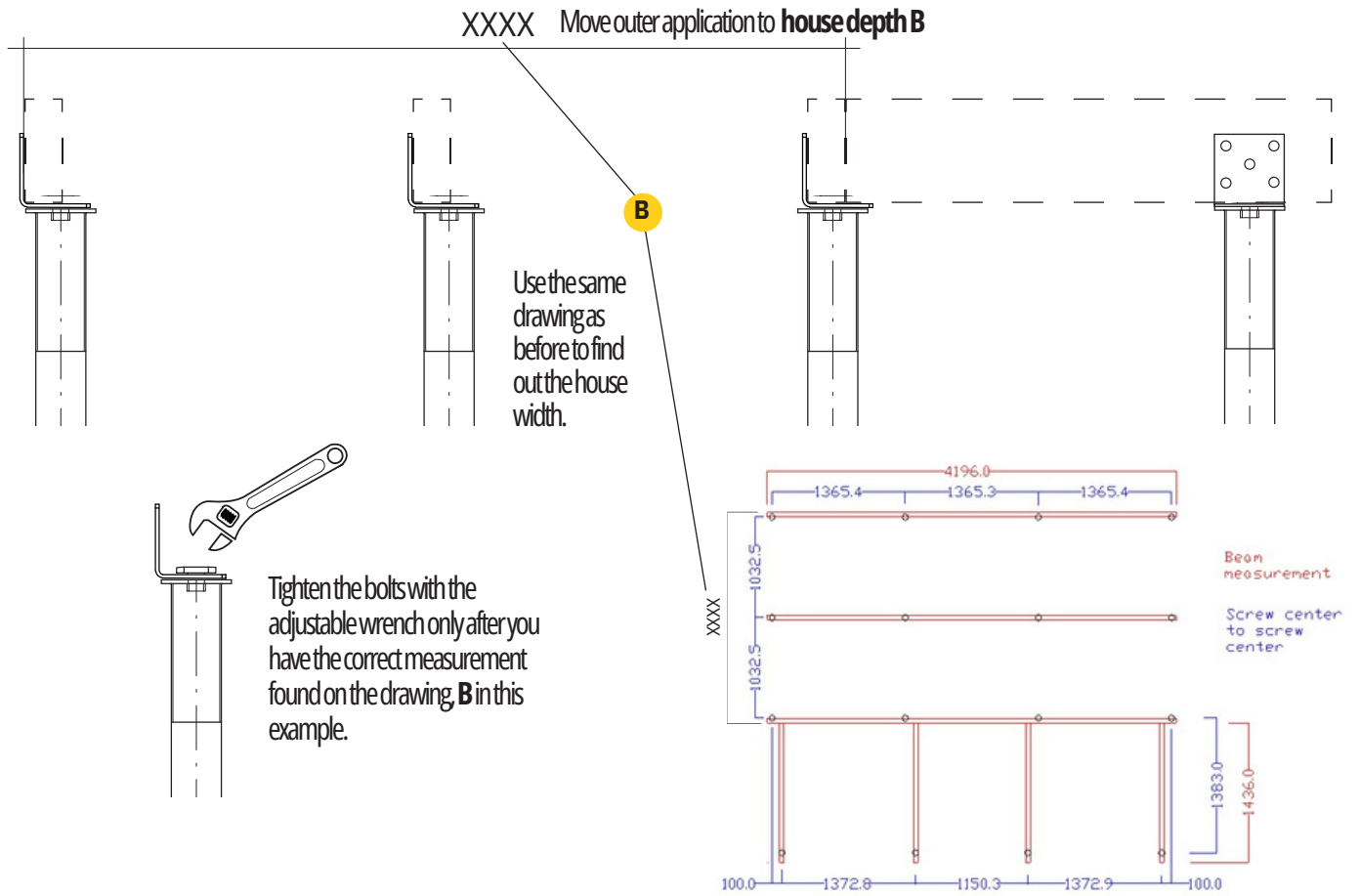
SGP screws
(Screw down bolt for application by hand)



See drawing on page 11 to see more easily how they should be placed.

4. PLACE THE BEAMS ON SCREWS

Now it is time to measure the placement of outer applications **to house width**. In the example below the inner measurement between applications should be XXXX mm.

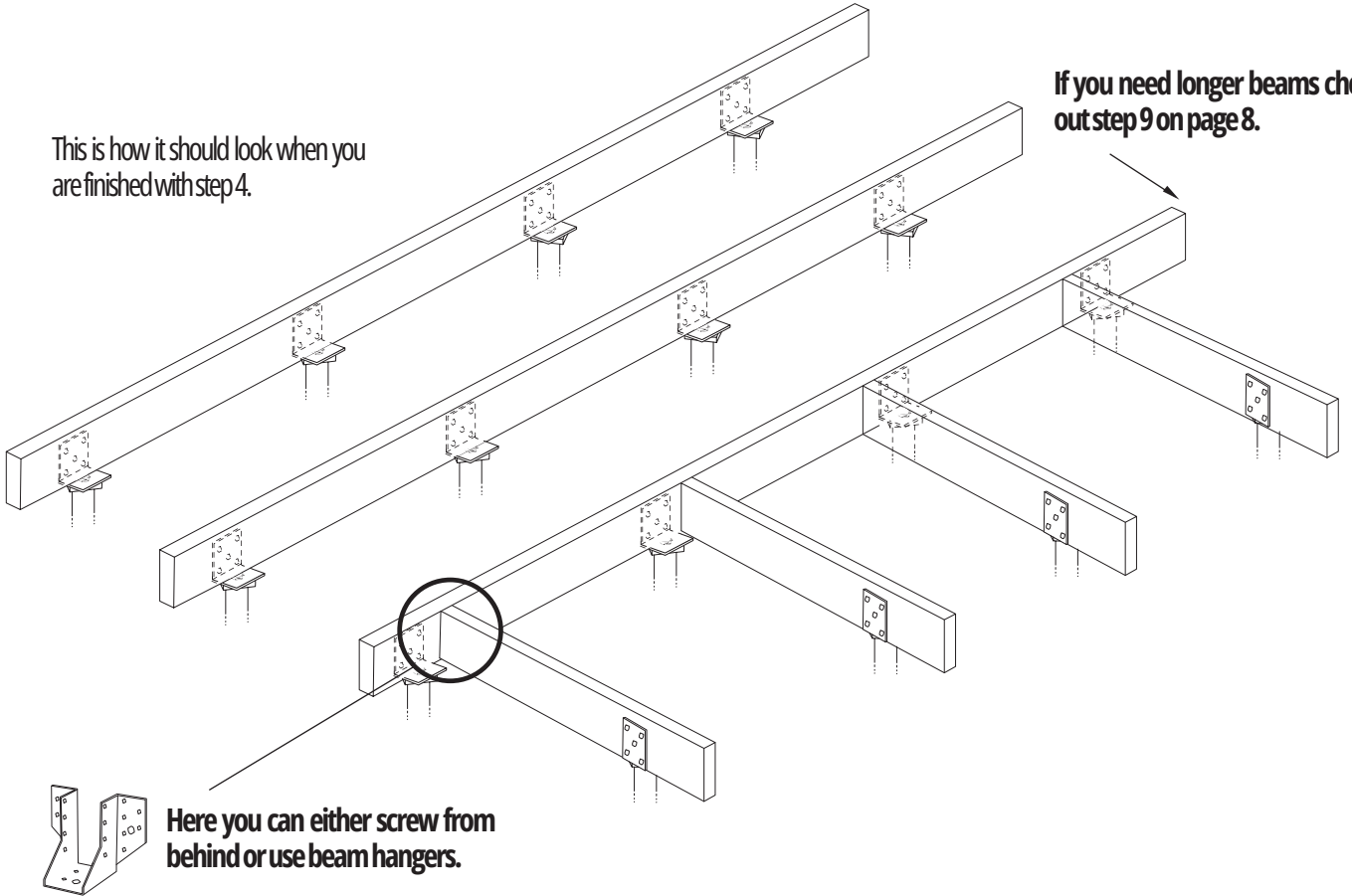


5. IT SHOULD NOW LOOK LIKE THIS

Now it is time to measure the placement of outer applications **to house width**. In the example below the inner measurement between applications should be XXXX mm.

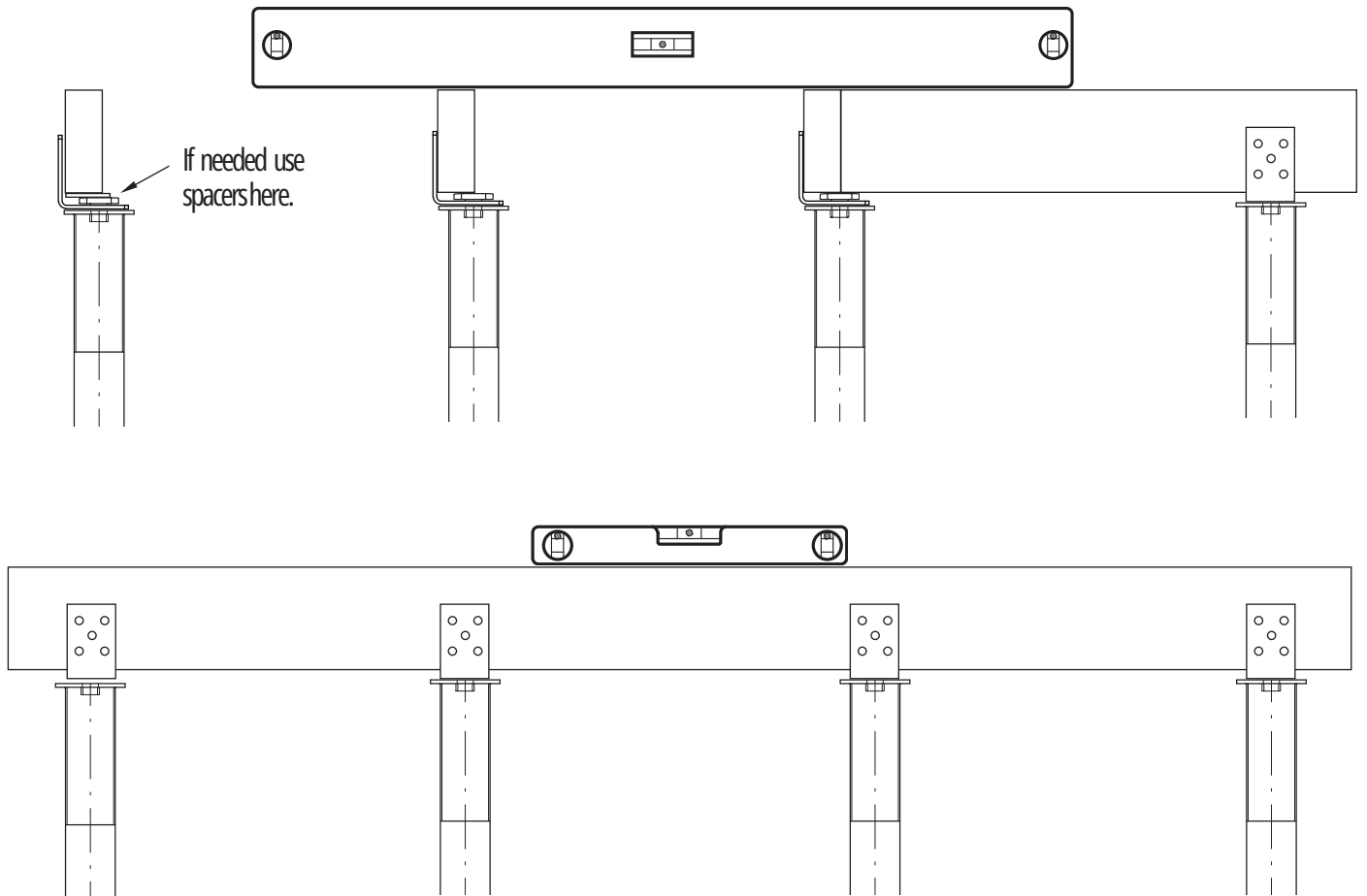
This is how it should look when you are finished with step 4.

If you need longer beams check out step 9 on page 8.



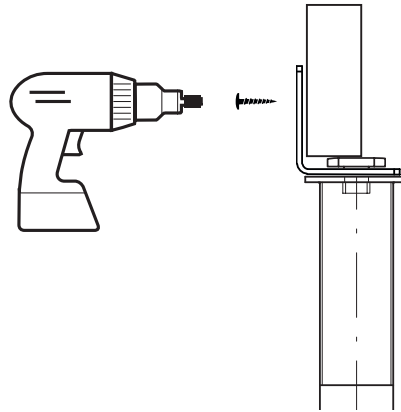
6. MAKE SURE BEAMS ARE ALL LEVEL

Place the beams on all screws, outer as well as inner. Here you can use the spacers to level out all the beams.



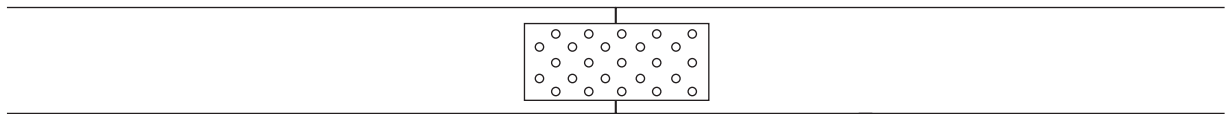
7. FASTEN ALL BEAMS TO APPLICATIONS

Fasten beams using outdoor wood screws with wide head.

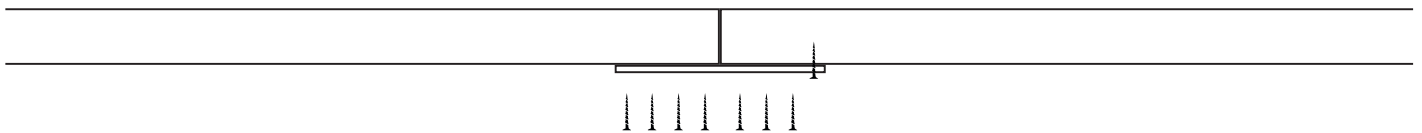
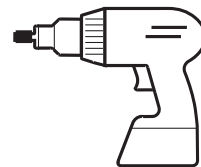


8. JOINING BEAMS IF NEEDED LONGER

If you don't have long enough beams you have to take two beams and join them together with nail plate.



MINIMUM 14 SCREWS
7 ON EACH SIDE



MINIMUM 14 SCREWS
7 ON EACH SIDE

9. MOUNT FLOOR JOISTS ON TOP OF BEAMS

When the floor joists are placed correctly on top of the floor beams, you can attach them. This step is so you in the next step easily can cut the floor beams to correct length.

10. CUT BEAMS TO LENGTH

You can also build the floorbeams and cut the beams to correct length with floorbeams as a measure. As a last step it is time to cut beams to correct length, check drawing for correct measurement.

